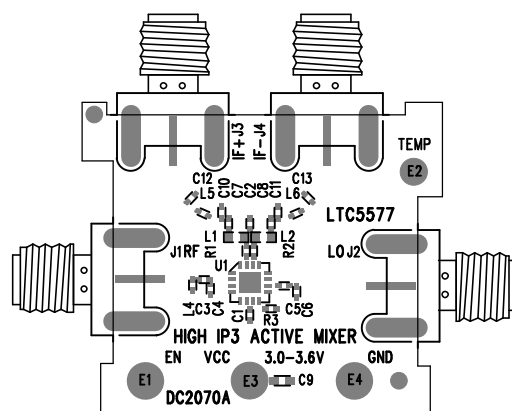


REVISION HISTORY				
ECO	REV	DESCRIPTION	APP. ENG.	DATE
-	2	2ND PROTOTYPE	WESTON S.	04-26-13

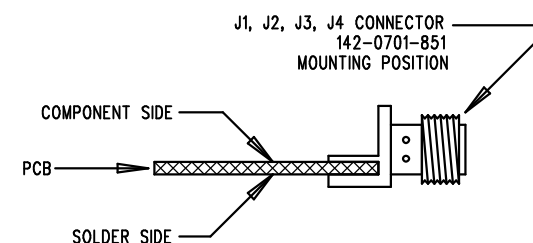



TOP SILKSCREEN

LINEAR TECHNOLOGY DATE: 04-26-13
DC2070A-2* LTC5577IUF
HIGH IP3 ACTIVE MIXER

NOTES: UNLESS OTHERWISE SPECIFIED

1. WORKMANSHIP SHALL BE IN ACCORDANCE WITH IPC-A-610.
2. ASSEMBLY PROCESS SHALL INCLUDE: REFLOW SOLDER TOP SIDE SMD. MAXIMUM SOLDER TEMPERATURE IS 240 DEGREES CELSIUS.
3. PARTS TO OMIT WILL BE SPECIFIED ON THE BILL OF MATERIALS. LOCATIONS OF OMITTED PARTS SHALL BE FREE OF SOLDER. MASK THE SOLDER STENCIL WHERE SMT PARTS ARE OMITTED.
4. DEPANELIZE BOARDS AFTER ASSEMBLY AND ROUTE-OUT THE BREAKOUT TABS ON FOUR SIDES OF THE BOARD EDGE.
5. DO NOT APPLY ANY KIND OF ASSEMBLY STAMP OR QA STAMP TO ANY BOARD.



APPROVALS		 <div> 1630 MCCARTHY BLVD MILPITAS, CA 95035 PH: (408)432-1900 www.linear.com LTC CONFIDENTIAL- FOR CUSTOMER USE ONLY </div>		
PCB DES.	AK			
APP ENG.	WESTON S..			
		TITLE: TOP ASSEMBLY DRAWING		
		HIGH IP3 ACTIVE MIXER		
		SIZE N/A	IC NO. LTC5577IUF DEMO CIRCUIT 2070A	REV. 2
SCALE = NONE		FILENAME: DC2070A-2.PCB		SHT 1 OF 1